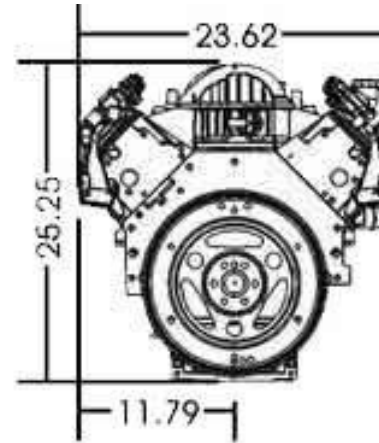
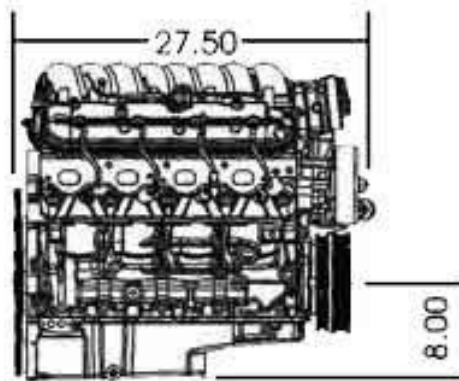


LYCOMING IO-540K

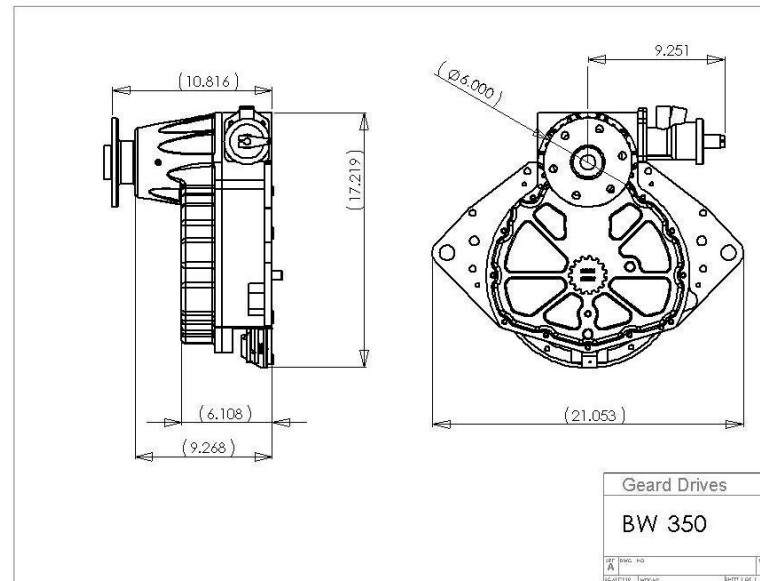


	COMPRESSION				HEIGHT	WIDTH	LENGTH	DRY WT
MODEL	RATIO	HP	RPM	TBO	(IN)	(IN)	(IN)	(LBS)
IO-540-K	8.70:1	300	2,700	2,000	19.60-20.86	34.25	38.62-39.34	466-474

CHEVROLET LS-3 and BW350 CASE



COMPRESSION					HEIGHT (IN)	WIDTH (IN)	LENGTH (IN)	DRY WT (LBS)
MODEL	RATIO	HP	RPM	TBO				
LS-3	10.50:1	365	4,500	3,000	25.25	23.62	27.50	339



Geard Drives
BW 350

COMBINED DIMENSIONS			
HEIGHT (IN)	WIDTH (IN)	LENGTH (IN)	DRY WT (LBS)
25.25	23.62	38.32	439

LYCOMING IO-540K to CHEVROLET LS-3 WEIGHTS

Based on RV-10 Installation

Lycoming IO-540-K/S, 300 hp & 584 ft-lb		LS3 6.2L V8, 367 hp & 428 ft-lb (713 ft-lb at prop)	
473.0	basic engine	402.0	basic engine
		-6.4	stock flexplate
		-56.6	stock exhaust manifolds
42.0	exhaust assembly	35.3	headers and exhaust
12.3	oil	8.8	oil
10.0	12v alternator	9.0	12v alternator
17.8	starter	12.0	starter
10.0	magneto & harness (2)	2.0	ECU
2.0	propeller governor	2.0	propeller governor
2.0	electrical harness	2.5	electrical harness
4.0	induction system w/filter	3.5	induction system w/filter
3.0	fuel pump	3.0	fuel pump & filter
28.0	motor mount	16.0	motor mount
		6.0	accessory drive & brackets
		15.0	coolant system
		24.0	antifreeze
		67.0	BW350 w/ oil
		35.0	flywheel, clutch, pressure plate assy
604.0		580.0	
		24.0	Less

Lycoming IO-540K to Chevrolet LS-3 & BW350 Comparison Tables (at propeller flange)

Stock LS3			BW350 Ratio 1.667	LS3 & BW350 @ Prop Flange			Lycoming IO-540K			INCREASED		INCREASED	
RPM	HP	Torque		RPM	HP	Torque	RPM	HP	Torque	HP	Torque	HP	Torque
800	25.0	272.0		480	25.0	453.3	480						
1000	42.0	290.0		600	42.0	483.3	600	36.0	310.7	6.0	172.6	16.67%	55.56%
1200	59.0	308.0		720	59.0	513.3	720	50.0	359.6	9.0	153.7	18.00%	42.74%
1400	75.0	328.0		840	75.0	546.7	840	64.0	394.6	11.0	152.1	17.19%	38.55%
1600	92.0	338.0		960	92.0	563.3	960	78.0	420.8	14.0	142.6	17.95%	33.89%
1800	108.0	344.0		1080	108.0	573.3	1080	92.0	441.1	16.0	132.2	17.39%	29.97%
2000	124.0	349.0		1200	124.0	581.7	1200	105.0	453.1	19.0	128.6	18.10%	28.37%
2200	140.0	351.0		1320	140.0	585.0	1320	119.0	466.8	21.0	118.2	17.65%	25.31%
2400	156.0	356.0		1440	156.0	593.3	1440	132.0	474.7	24.0	118.6	18.18%	24.99%
2600	172.0	362.0		1560	172.0	603.3	1560	146.0	484.7	26.0	118.7	17.81%	24.49%
2800	188.0	368.0		1680	188.0	613.3	1680	159.0	490.1	29.0	123.2	18.24%	25.14%
3000	204.0	370.0		1800	204.0	616.7	1800	173.0	497.7	31.0	119.0	17.92%	23.90%
3200	220.0	370.0		1920	220.0	616.7	1920	188.0	507.1	32.0	109.6	17.02%	21.62%
3400	230.0	376.0		2040	230.0	626.7	2040	201.0	510.2	29.0	116.4	14.43%	22.82%
3600	260.0	390.0		2160	260.0	650.0	2160	220.0	527.4	40.0	122.6	18.18%	23.24%
3800	288.0	400.0		2280	288.0	666.7	2280	244.0	554.2	44.0	112.5	18.03%	20.30%
4000	305.0	408.0		2400	305.0	680.0	2400	269.0	580.4	36.0	99.6	13.38%	17.16%
4200	332.0	418.0		2520	332.0	696.7	2520	283.0	581.6	49.0	115.1	17.31%	19.79%
4400	352.0	424.0		2640	352.0	706.7	2640	295.0	578.7	57.0	128.0	19.32%	22.12%
4500	365.0	425.0		2700	365.0	708.3	2700	300.0	575.4	65.0	132.9	21.67%	23.11%

Lycoming IO-540K to Chevrolet LS-3/BW350 Comparison Chart (at propeller flange)

